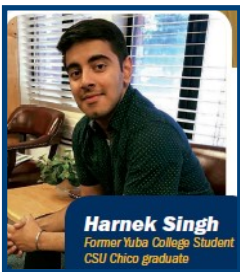


Scholarship Campaign

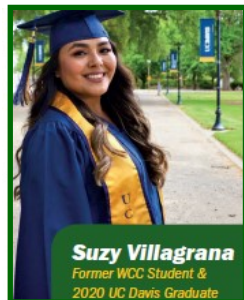
The Woodland Community College Fund and the Yuba College Fund have launched a direct mail and social media fundraising campaign to benefit scholarship programs at each college. The campaign highlights two of our alumni and the impact that attending WCC and Yuba have had on their lives. The goal of the campaign is to raise funds that can be used to provide additional scholarships for students.



Yuba prepared me for my future. It allowed me to grow academically, socially and professionally. Reflecting back, Yuba College was one of my best decisions because I made amazing friends and got an excellent education.

Harnek Singh
Former Yuba College Student
CSU Chico graduate

My life changed the day I stepped foot on the WCC campus - it became my 'home away from home.' Woodland Community College gave me the ability to believe in myself and have the confidence to achieve my dreams.



Suzy Villagrana
Former WCC Student &
2020 UC Davis Graduate

[GIVE YUBA](#)

[GIVE WCC](#)

www.yccdfoundation.org

The Yuba Community College District Foundation has a new home on the web, www.yccdfoundation.org. The new site provides information on the various programs and activities that are supported by the Foundation; information for donors on the various ways they can make a gift, including sections on Employee Giving, Planned Giving and establishing a Legacy Endowment. There are specific pages for the three major Funds of the Foundation: Woodland Community College Fund, Yuba College Fund and the Lake County Fund. These pages will provide information on local giving initiatives with giving links specific to campus programs or scholarships.



Scholarship Management Upgraded



In collaboration with the Financial Aid Offices of Yuba and Woodland Community Colleges the Foundation is

excited to announce the transition to a new scholarship management system. NextGen's Scholarship Manager will provide an easier platform for students applying for scholarships. The program will allow each college to have their own smart application, is intuitive in matching scholarship opportunities to students based on keywords, and provides a simplified process for volunteers to review applications. A new feature will be the donor portal that will recognize our scholarship donors, and increase communication between donors, students and the Foundation. The program is scheduled to go live on January 1, 2021 for the upcoming scholarship awarding cycle.

Neena Gill Memorial Scholarship



Neena Gill was a beloved member of the Yuba College family who died in March of 2020 from metastatic breast cancer. Neena was an academic counselor and professor at Yuba College for 30 years. Her time at Yuba was spent helping women, students from disadvantaged

backgrounds, and re-entry and minority students achieve their academic ambitions. Thanks to the generosity of her family, and many individuals that knew her the Foundation is pleased to announce the creation of the Neena Gill Memorial Scholarship. This endowed scholarship will annually support Yuba students with financial need and an intent to transfer to a four year institution to pursue a career in counseling, psychology or education. You can support the Neena Gill Scholarship by clicking [HERE](#).